

ZURN AUSTRALIA PTY LTD WARRANTY STATEMENT: ZURN PRODUCTS EFFECTIVE 1 JULY 2016

1. Zurn Australia P/L provides consumers with the following warranty in relation to this Product, in addition to complying with the requirements of any relevant legislation, including the Competition and Consumer Act 2010 (Cth) in Australia and the Consumer Guarantees Act 1993 in New Zealand (the Acts), except where a New Zealand consumer acquires the relevant Product for the purposes of a business.
2. In this warranty, we have used the following definitions:
 - (a) Zurn Australia, our or we means Zurn Australia Pty Ltd, ABN 12 164 922 758 of 49 Lakeside Drive Broadmeadows Victoria 3047;
 - (b) Products means goods manufactured and distributed in Australia and New Zealand by Zurn Australia;
 - (c) Material means a material or component used in the manufacture of the Products;
 - (d) Warranty Period means 12 months from the date of purchase of the relevant Product. If the Product or part (as the case may be) is repaired or replaced, there will be no extension to the original warranty period; and
 - (e) Workmanship means the handling, assembly and manufacturing processes performed by or on behalf of Zurn Australia in order to manufacture the Products.
3. Zurn Australia warrants that for the duration of the Warranty Period, all Products will be free of faults arising from defects in Workmanship or Materials, on the terms and conditions set out in this warranty.
4. Zurn Australia undertakes that if during the Warranty Period any Product, or any part of a Product, has failed to operate correctly due to faulty Workmanship or defective Material, it will repair or replace the Product or part (as the case may be) free of charge provided that the following procedure is met:
 - (a) The consumer must contact Zurn Australia upon becoming aware of any defect to a Product and complete and return a Service Request Form. The Service Request Form is available at zurn.com.au or upon request from Zurn Australia. The contact details for Zurn Australia are set out at the bottom of this page under the heading "Zurn Australia Offices".
 - (b) Following consultation with Zurn Australia, Zurn Australia will determine whether there is a defect, and if so Zurn Australia agrees (at Zurn Australia's option) to repair, replace or supply equivalent goods, or pay the cost of any of those remedies to the consumer.
 - (c) If Zurn Australia requests the return of the applicable Product or part, Zurn Australia will be responsible for the collection and freight costs of returning that Product or part. The consumer agrees to assist Zurn Australia with any reasonable request to enable Zurn Australia to collect such Product or part.
 - (d) Zurn Australia also agrees to be responsible for the freight costs to deliver any new Product or replacement part to the consumer.
5. This warranty is in addition to any non-excludable legal rights or remedies conferred on the consumer under any applicable Act and any similar laws. To the extent permitted by law, Zurn Australia's liability for any non-excludable condition or warranty is limited to rectifying any defect at its option, as set out in paragraph 4(b).
6. Subject to the requirements of any applicable Act or legislation and to the extent permitted by law, no liability (whether expressed implied) of any nature whatsoever, is accepted by Zurn Australia for any consequential loss, damage or injury arising as a result of any fault in the Products.
7. This warranty does not extend to damage to Products which occurs during transit or transportation, or which is caused by any abuse, accident or improper installation, connection, use, adjustment or repair or use of goods otherwise than in accordance with instructions issued by Zurn Australia or the manufacturer of the Product.
8. The following applies to consumers who purchased a relevant Product in Australia:

*Our goods come with guarantees that cannot be excluded under the Australian Consumer Law.
 You are entitled to a replacement or refund for major failure and compensation for any other reasonably foreseeable loss or damage.
 You are also entitled to have the goods repaired or replaced if the goods fail to be of acceptable quality and the failure does not amount to a major failure.*



HEAD OFFICE
 49 Lakeside Drive Broadmeadows VIC 3047
 1300 00 ZURN
 F: 03 9357 1455
salesaus@zurn.com

ZURN.COM.AU

ZURNAU_MKTG_INST_FV-HYDCONC, REV. 16/10

FLUSH VALVES

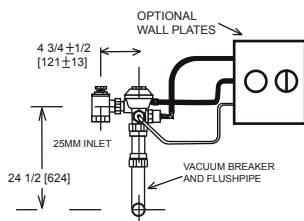
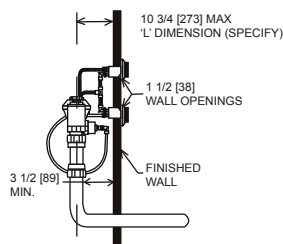
INSTRUCTIONS

ZDF-6152XL



Technical Requirements

- Minimum Pressure : 50kPa
- Maximum Pressure : 500kPa
- Flush Volume : 6/3 litres adjustable
- Stop valve inlet : 25mm BSP
- Required Flow Rate : 1.5 litres per second

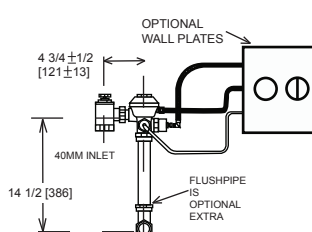
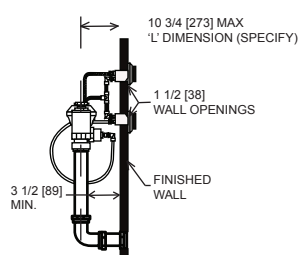


ZDF-6152L



Technical Requirements

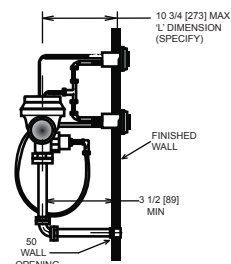
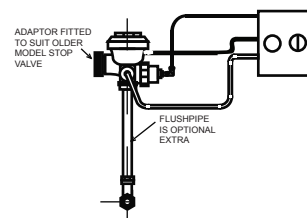
- Minimum Pressure : 50kPa
- Maximum Pressure : 300kPa
- Flush Volume : 6/3 litres adjustable
- Stop valve inlet : 40mm BSP
- Required Flow Rate : 1.5 litres per second



ZDF-6154 (GHUPS)

Technical Requirements

- Minimum Pressure : 50kPa
- Maximum Pressure : 300kPa
- Flush Volume : 6/3 litres adjustable
- Required Flow Rate : 1.5 litres per second



ZURN.COM.AU

ZURN CONCEALED DUAL FLUSH

HYDRAULIC INSTALLATION

LOW PRESSURE & MAINS PRESSURE

- 1) Connect Stop Valve to supply line
40mm Low Pressure
25mm Mains Pressure
- 2) Connect flush valve body loosely to stop valve
- 3) Measure & cut flush pipe to connect flush valve to pan.
Note: mains pressure flush valves require a vacuum breaker to be fitted into the top of the flush pipe. Turn tube nut onto flush valve body hand tight plus 1/8th turn. Over tightening will damage vacuum breaker and void warranty
- 4) Connect flush pipes to flush valve & pan
- 5) Attach green tube to the 1/2 flush handle port opposite inlet valve. Attach green tube to 1/2 flush push button assembly.
- 6) Attach clear tube to full flush handle port 90 degrees to inlet valve
- 7) Attach white full flush tube to full flush button
- 8) Connect black high pressure tube to flush valve top nipple & to push button tee connector, then connect the hoses from the tee to the push button assemblies
- 9) If push button assemblies are being used on tile wall (with cavity access) a 35mm hole will be necessary to affix push button to wall
- 10) Check all connections for tightness & slowly turn on stop valve 1-2 turns. Check for leaks. Flush valve will run momentarily until the pressure in the valve equalizes. Turn the stop valve on 2 or more turns.
- 11) Push either 1/2 flush or full flush to check pressure & volumes. To increase flush pressure increase turns on stop valve.

