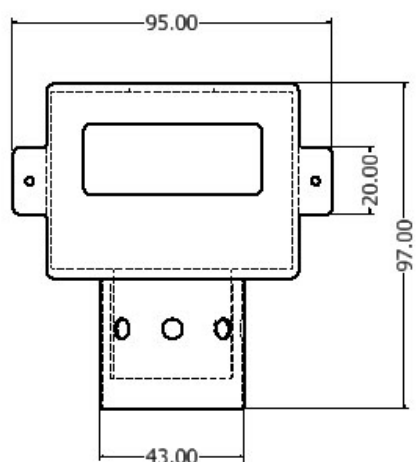
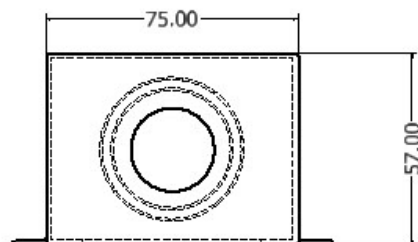


LWG-GPO-TUN

STAINLESS STEEL BLANK ELECTRICAL GPO FACE PANEL TUNDISH

Dimensional Data (mm) are Subject to Manufacturing Tolerances and Change Without Notice



ENGINEERING SPECIFICATION - LWG-GPO-TUN

- Easy & economical set up
- Easily removable face plate
- Heavy duty #304 Stainless Steel construction (not recommended for coastal areas)
- Vandal proof fitted - optional
- 40mm pipe connection

PRODUCT INFORMATION

LWG-GPO-TUN FEATURES

Blank electrical GPO face panel

Easily removable face plate

#304 construction

Vandal resistant

40mm pipe connection