

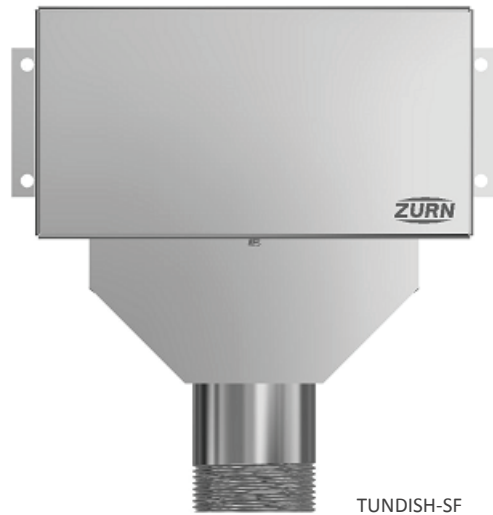
TUNDISH-PF & TUNDISH-SF

STAINLESS STEEL SOLID OR WINDOW FACED TUNDISH

Dimensional Data (mm) are Subject to Manufacturing Tolerances and Change Without Notice



TUNDISH-PF



TUNDISH-SF

ENGINEERING SPECIFICATION - TUNDISH-PF, TUNDISH-SF

- Easy & economical set up for airconditioning discharges
- Easily removable face plate
- Heavy duty #304 Stainless Steel construction (not recommended for coastal areas)
- Vandal proof fitted - optional
- 40mm BSP standard

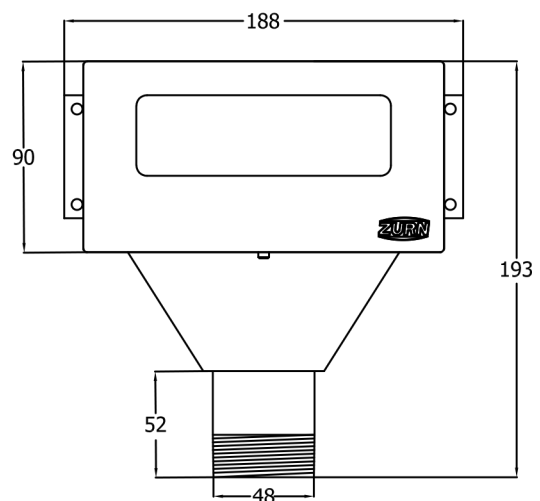
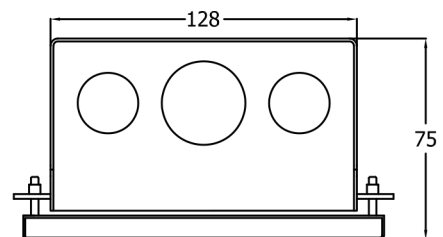
PRODUCT INFORMATION

TUNDISH-PF FEATURES

- Clear window face
- Easily removable face plate
- #304 construction
- Vandal resistant
- 40mm BSP Standard

TUNDISH-SF FEATURES

- Solid face
- Easily removable face plate
- #304 Construction
- Vandal resistant
- 40mm BSP Standard



Note: Drawing illustrates TUNDISH -PF with clear plastic window, same drawing for TUNDISH-SF, minus window

PRODUCT CODES

CODE	DESCRIPTION
TUNDISH-PF	IN WALL TUNDISH S/S FACE W/ CLEAR PLASTIC WDW
TUNDISH-SF	IN WALL TUNDISH S/S SOLID FACE