

# TUNDISH-ZPF & TUNDISH-ZSF

## STAINLESS STEEL WINDOW OR SOLID FACED TUNDISH

Dimensional Data (mm) are Subject to Manufacturing Tolerances and Change Without Notice



TUNDISH-ZPF



TUNDISH-ZSF

### ENGINEERING SPECIFICATION - TUNDISH-ZPF, TUNDISH-ZSF

- Easy & economical set up for airconditioning discharges
- Easily removable face plate
- Heavy duty #304 Stainless Steel construction
- Vandal proof fitted - optional
- 40mm BSP standard

### PRODUCT INFORMATION

#### TUNDISH-ZPF FEATURES

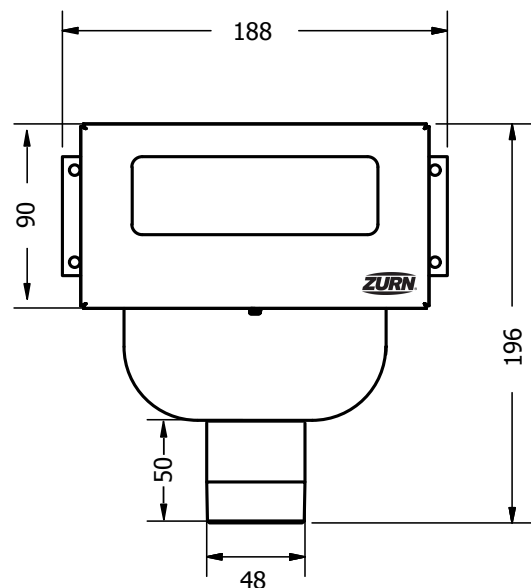
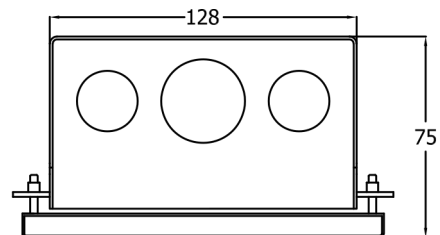
- Clear window face
- Easily removable face plate
- #304 construction
- Vandal resistant
- 40mm BSP Standard

#### TUNDISH-ZSF FEATURES

- Solid face
- Easily removable face plate
- #304 Construction
- Vandal resistant
- 40mm BSP Standard

### PRODUCT CODES

CODE	DESCRIPTION
TUNDISH-ZPF	IN WALL TUNDISH S/S FACE W/ CLEAR PLASTIC WDW
TUNDISH-ZSF	IN WALL TUNDISH S/S SOLID FACE



Note: Drawing illustrates TUNDISH -ZPF with clear plastic window, same drawing for TUNDISH-ZSF, minus window