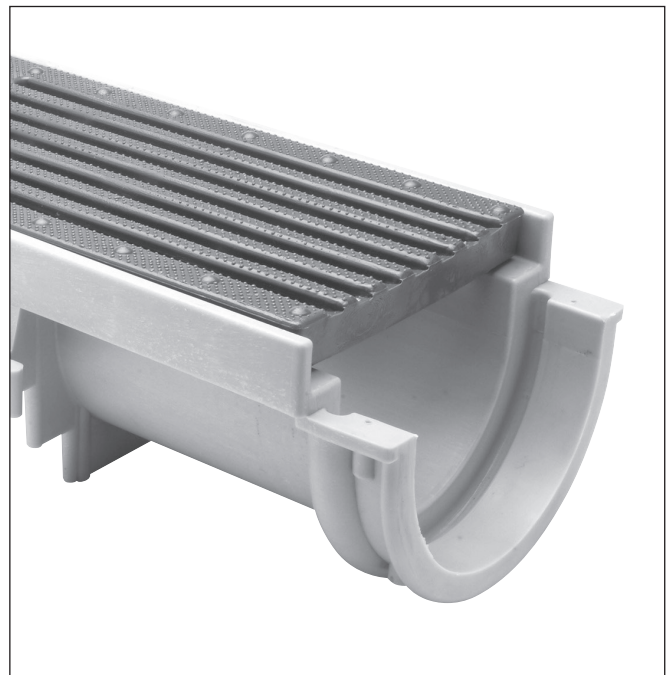


ZURN® *Linear Drainage*

Z883 ^{100mm} *Clear Opening*

Shallow Trench

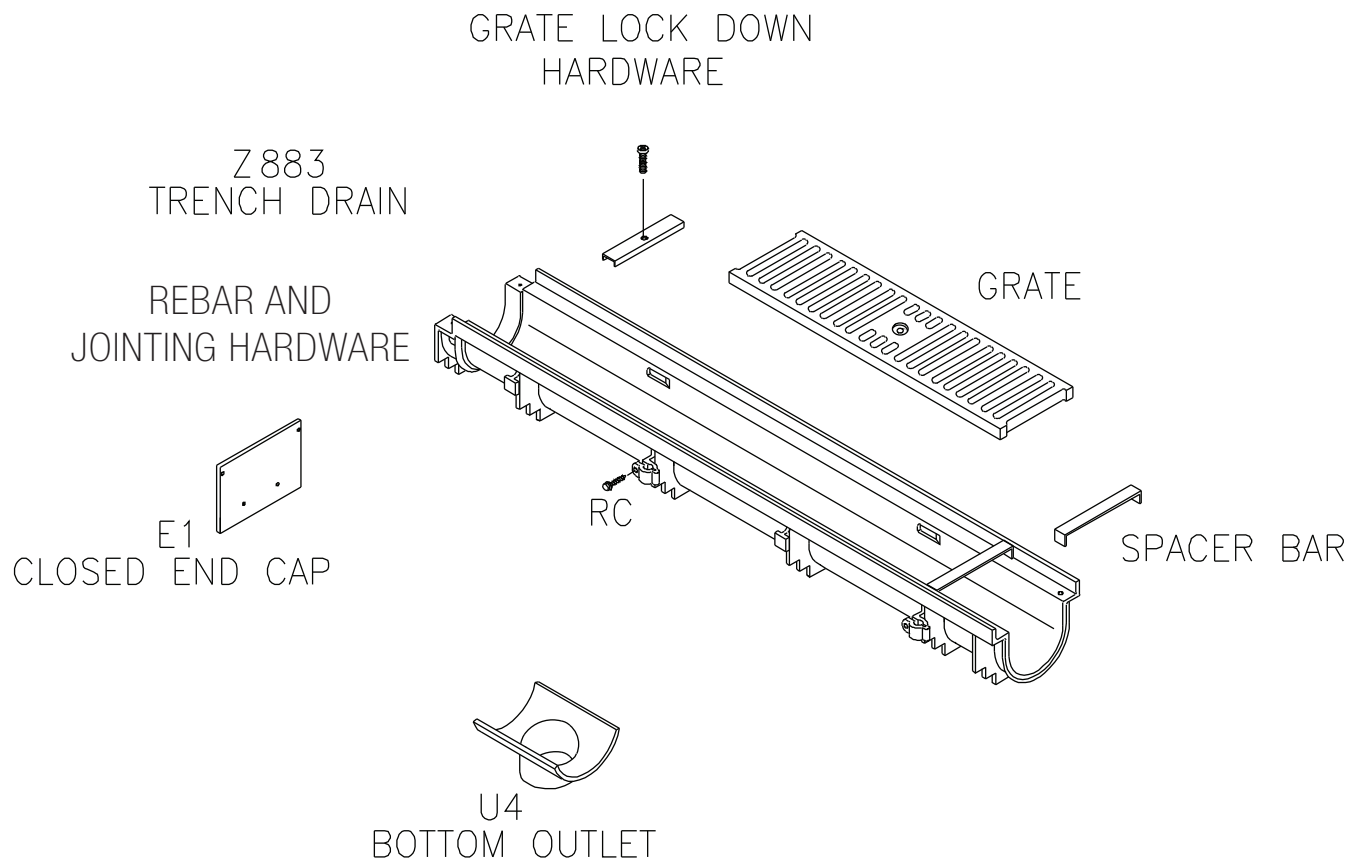


Installation Instructions

Z883 Accessories

Below are some of the trench drain components typical to an installation. Double check your order to ensure that you have all components particular to your job before beginning

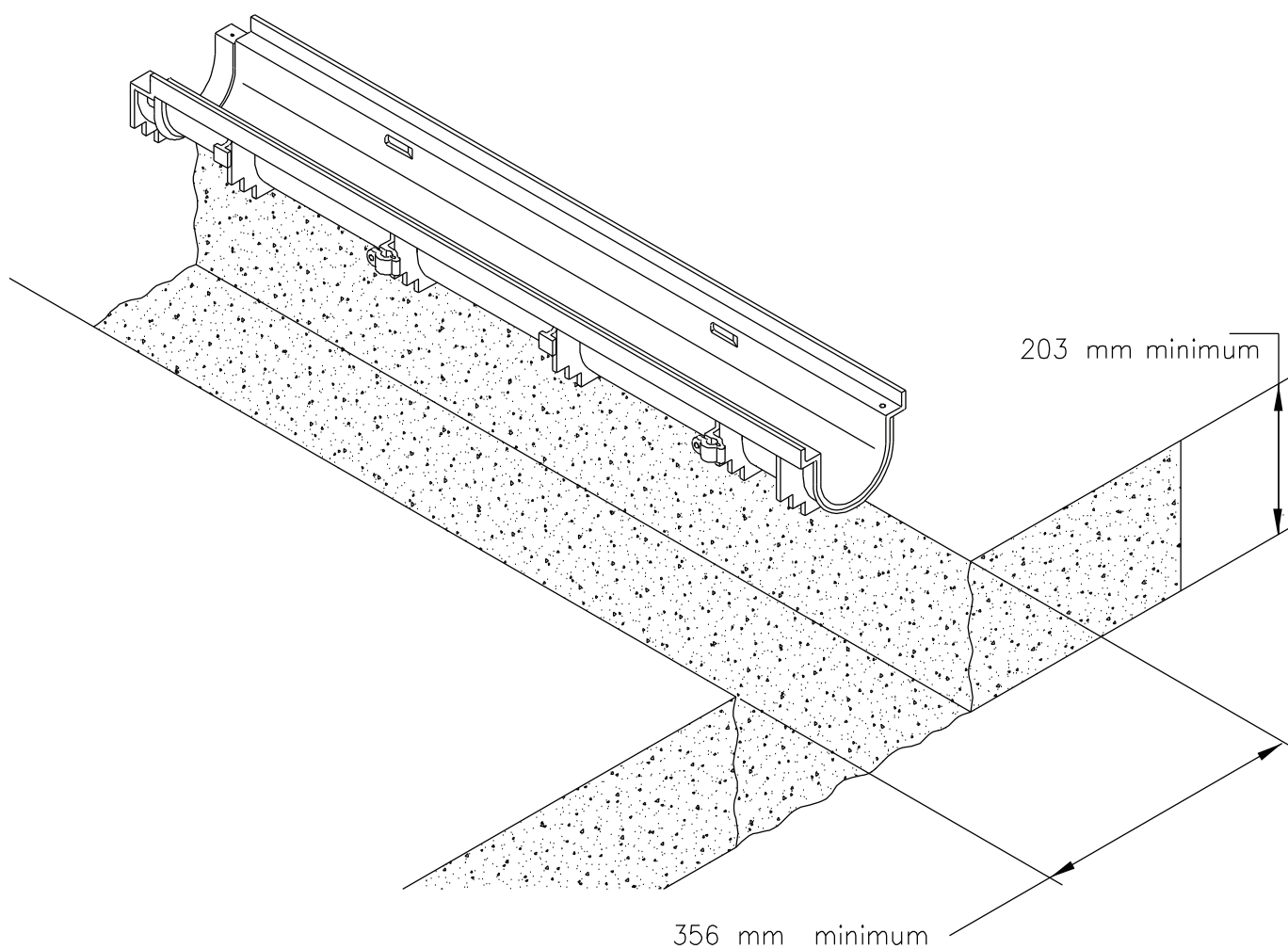
your installation. Contact 1300 00 ZURN should additional material be required.



Excavation

Trench excavation must be 102mm greater than the trench depth and a minimum width of 356mm. Soft and/or shifting soil substrates may cause cracking of the concrete

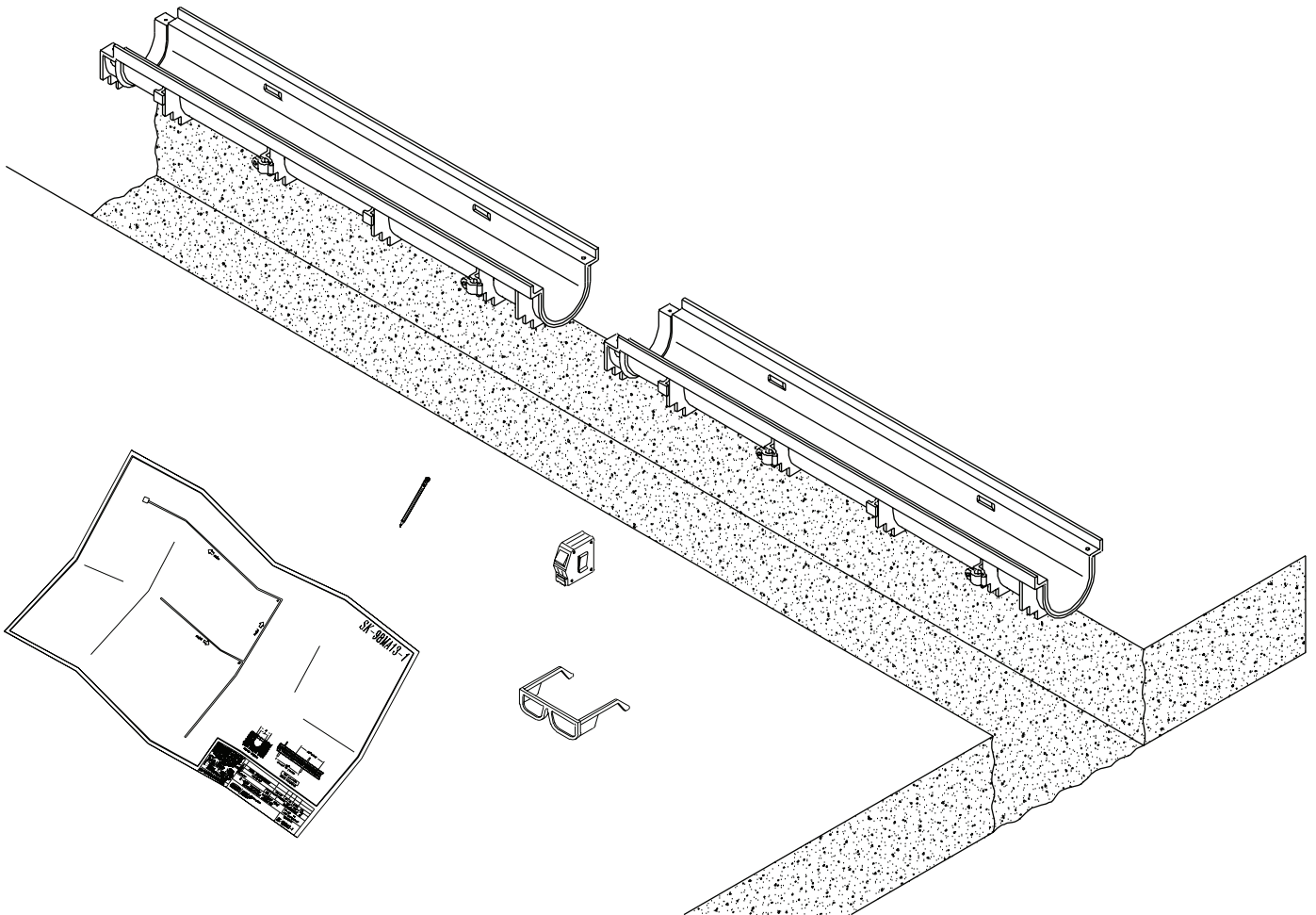
and consequent movement of the trench. It is critical that the concrete be poured on an adequate foundation.



Overall Layout

Upon completion of the trench excavation, the channels should be placed in numeric order alongside the excavation

and according to the job layout. Grates are not installed at this time.

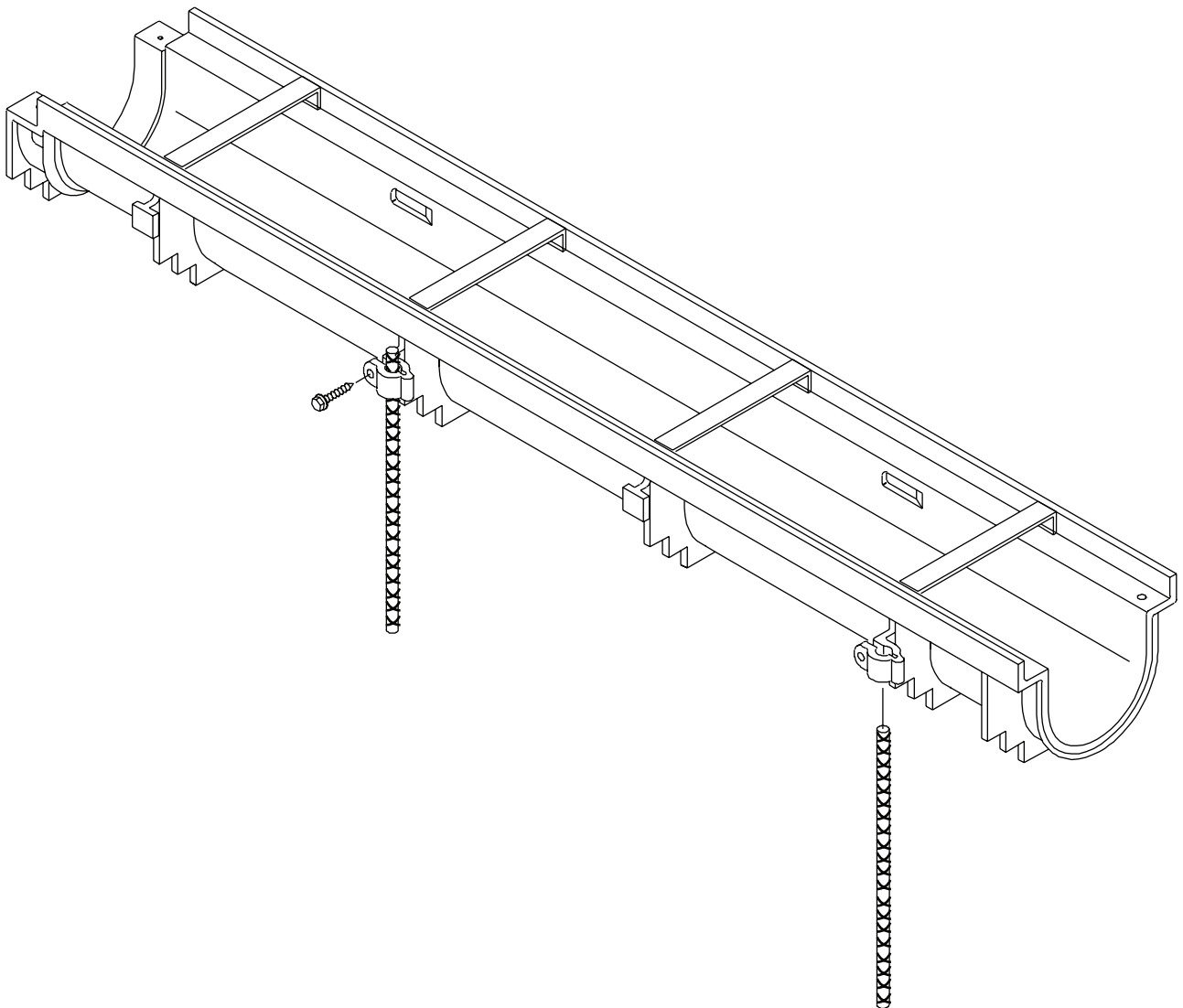


Setting The Trench

Typically, a trench system is assembled from the outlet on back. Starting with the last section or catch basin, set the first channel utilizing Flo-Thru's unique Integral Rebar Clip anchoring system. Rebar clips are used on both sides of the length of each trench drain for easy attachment to 10mm rebar stakes. Simply place through rebar clips and drive the stakes into the ground for positive anchoring. Attach the

trench drain to the rebar stakes with the hardware provided. Place Spacer Bars in grate opening every 254mm (4 per trench) to prevent deflection of trench walls during the concrete pour.

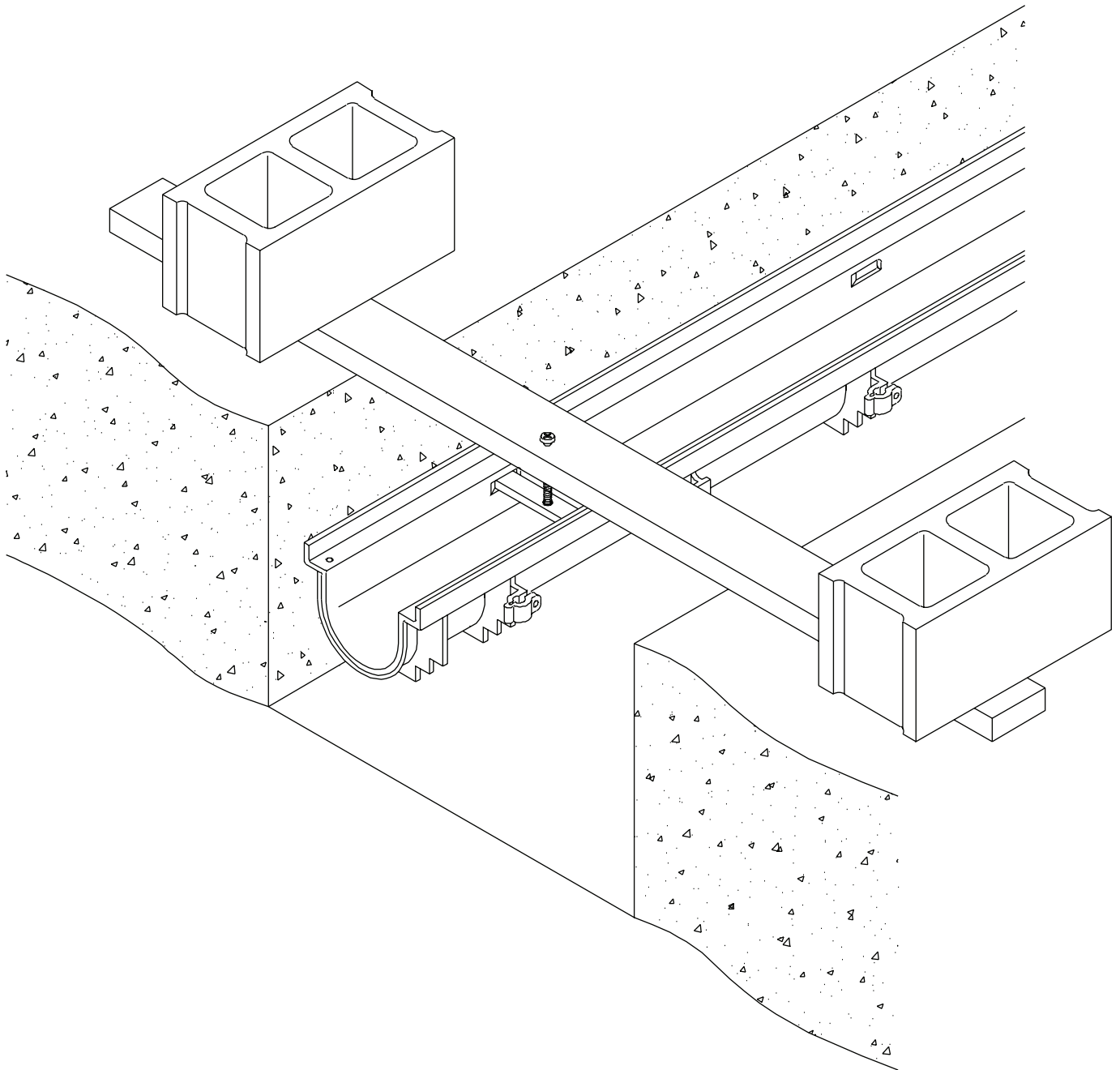
Adjust the trench to the desired elevation and continue with the adjacent section.



Suspended Installation

An alternative means of installation is to suspend the trench drain as shown. Wooden braces to hang the trench run can be attached to the drain body through the grate lock down bars as illustrated above.

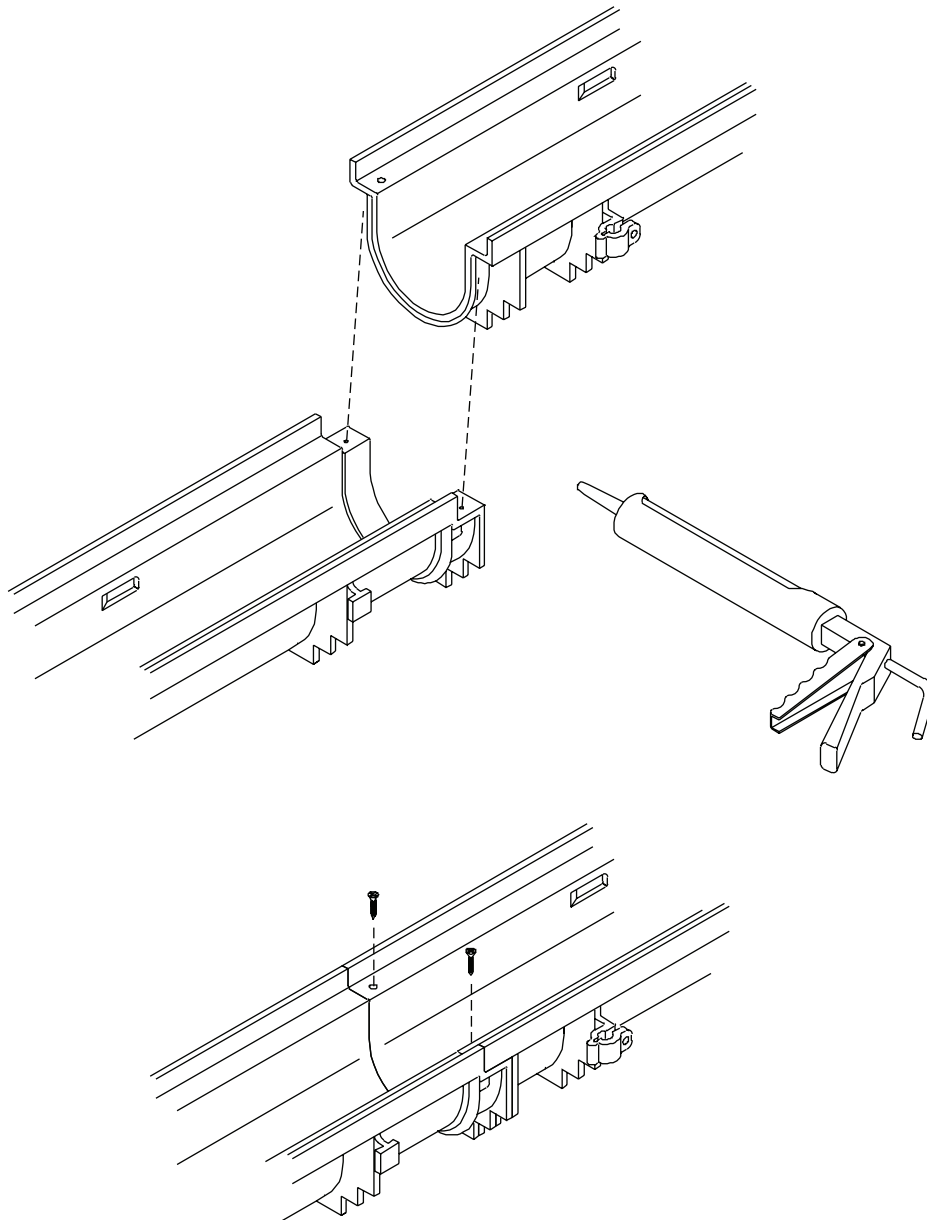
Note: Unless Grate Lockdown option is specified, the suspended installation method cannot be utilized.



Joint Connection

Assembling the trench run is easy using Flo-Thru's mechanical interlocking joints. Simply align the two mating ends of the trench sections and fasten with the hardware

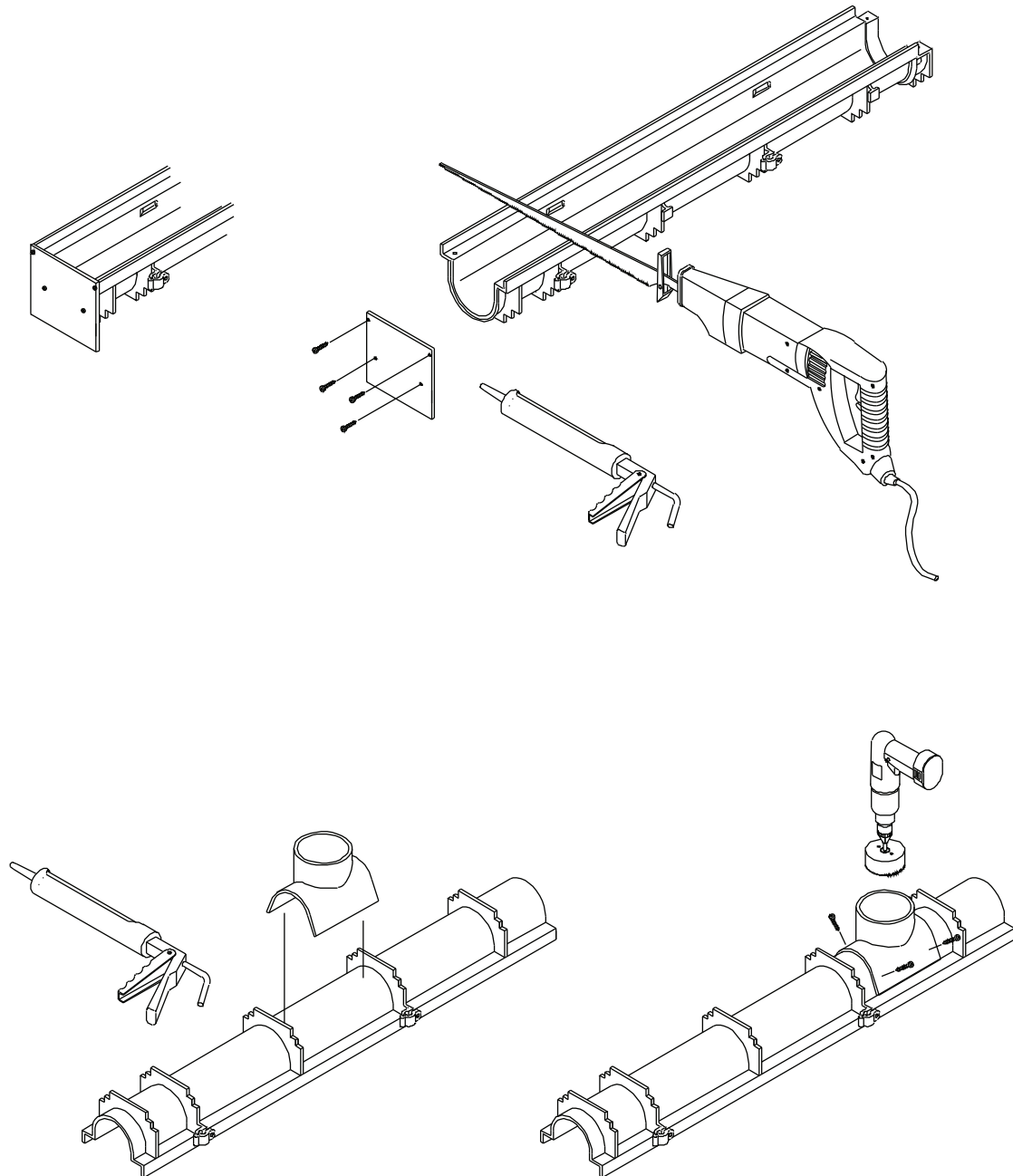
fasteners provided. A silicone caulk or a construction adhesive such as Liquid Nails is recommended to be used at each joint as a sealer.



Accessories

To attach an end cap, cut trench to desired length if necessary and attach with provided screws and a silicone caulk or a construction adhesive if desired. A bottom outlet is attached to the bottom side of the trench drain with provided screws and a silicone caulk or a construction

adhesive if desired as shown below. A hole saw can be used to cut the appropriate size hole through the bottom of the trench.

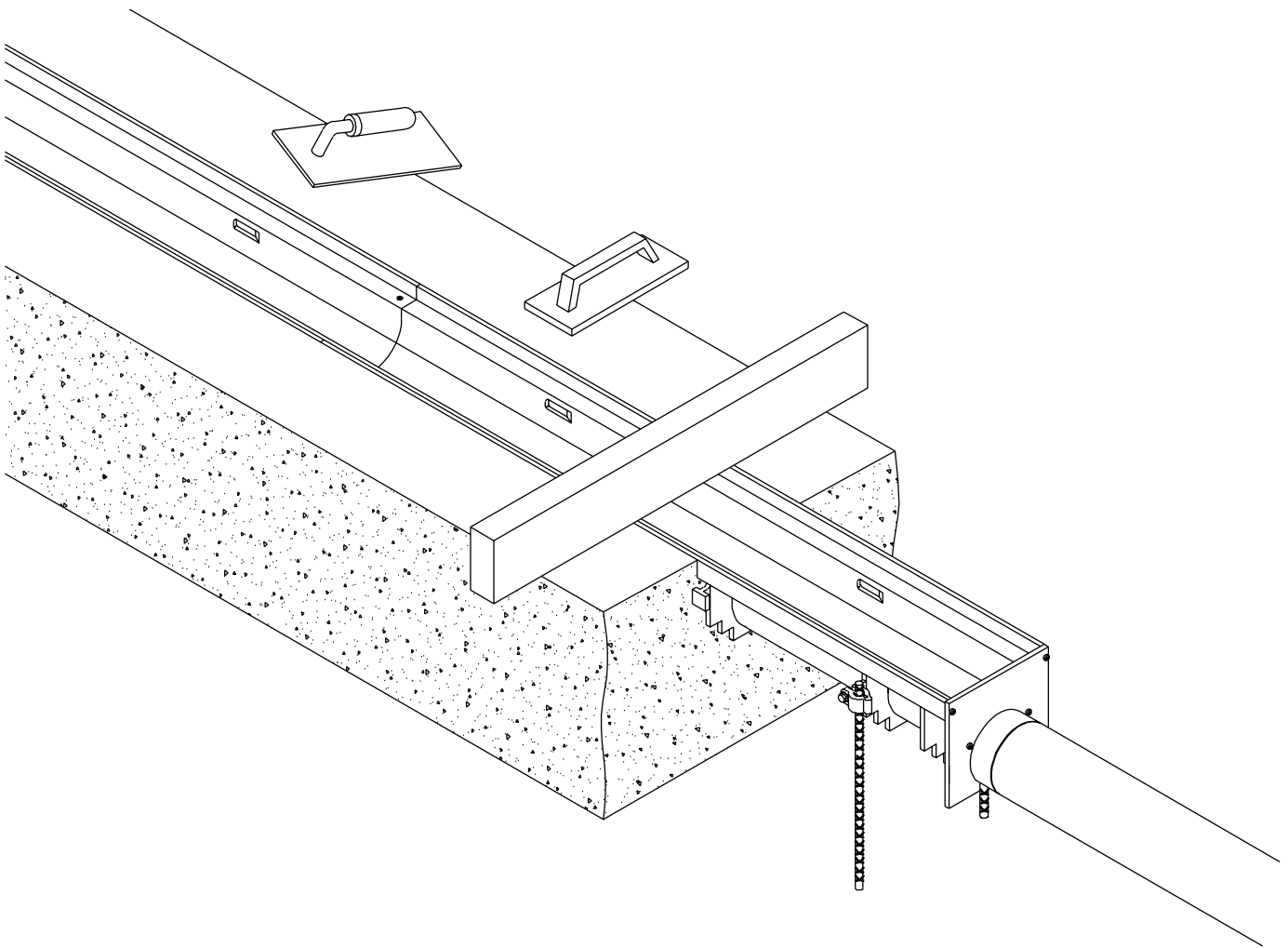


Pouring The Concrete

Pour the concrete around the three sides of the trench drain. Be certain to adequately **VIBRATE** the concrete as it is being placed. Proper vibration will eliminate any unwanted voids within the concrete pour.

Finish troweling should be done to set the top edge of the trench drain about 2mm below the floor grade. Remember to compensate for concrete shrink that may occur during cure so that the edge of the trench drain does not protrude above the finished floor grade.

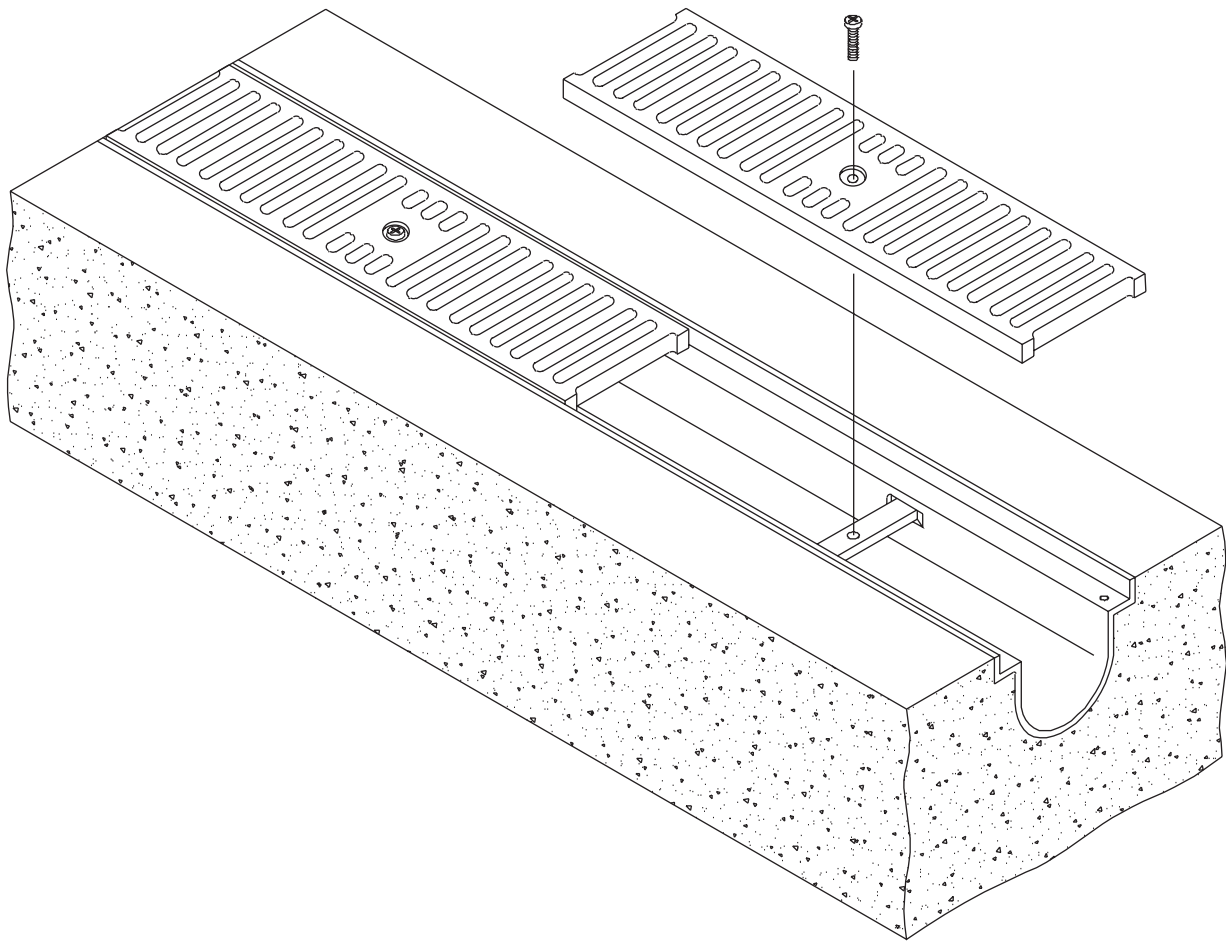
Note: Please refer to specification sheets for recommended install details.



After The Pour

After the concrete has been poured, vibrated, and given sufficient time to dry, both the grates and grate lock down bolts **must** be installed. The center of the grate should straddle the toggle-in lockdown bar. The exception is when the channel is cut. To place these grates, line up the lock down hole in the

grate with the lock down hole in the bar. Grates with a length less than 305mm will not be able to be locked down. Lock down bolts can be installed using a 7/16" [11mm] socket.



Notes

[illegible]



ZURN AUSTRALIA
49 LAKESIDE DRIVE BROADMEADOWS VIC 3047
PHONE: 1300 00 ZURN FAX: 03 9357 1455