

### Application

Designed for installation on water lines to protect against both backsiphonage and backpressure of polluted water into the water supply. Dual Check Valve shall provide protection where a potential hazard exists. (Low Hazard)



### Standards Compliance

Australian WaterMark and Standards Mark



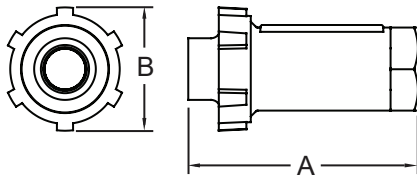
STANDARDS MARK  
AS/NZS 2845.1  
LIC. SMK1379

### Materials

Main valve body Cast Bronze  
Elastomers EPDM, Buna Nitrile  
Springs Stainless Steel 300 Series  
Polymers Noryl, Delrin

### Operating Parameters

Maximum Working Water Pressure 200kPa  
Maximum Working Temperature 82°C

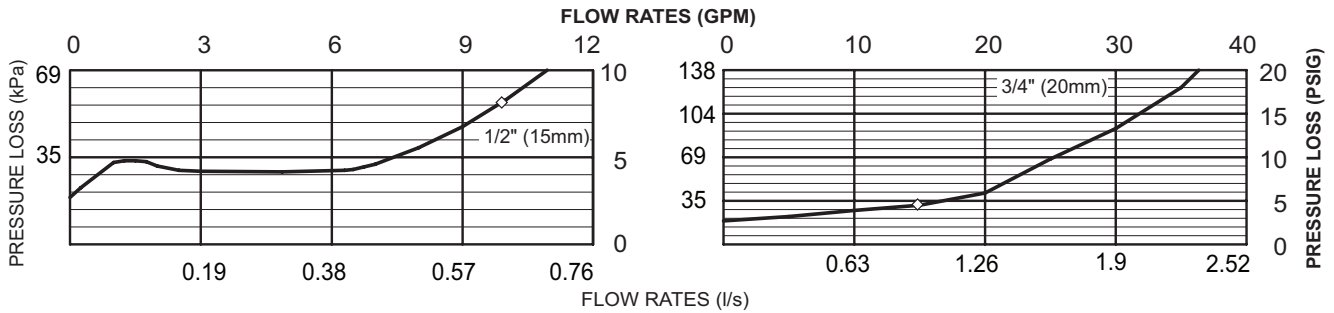


### Dimensions & Weights (do not include pkg.)

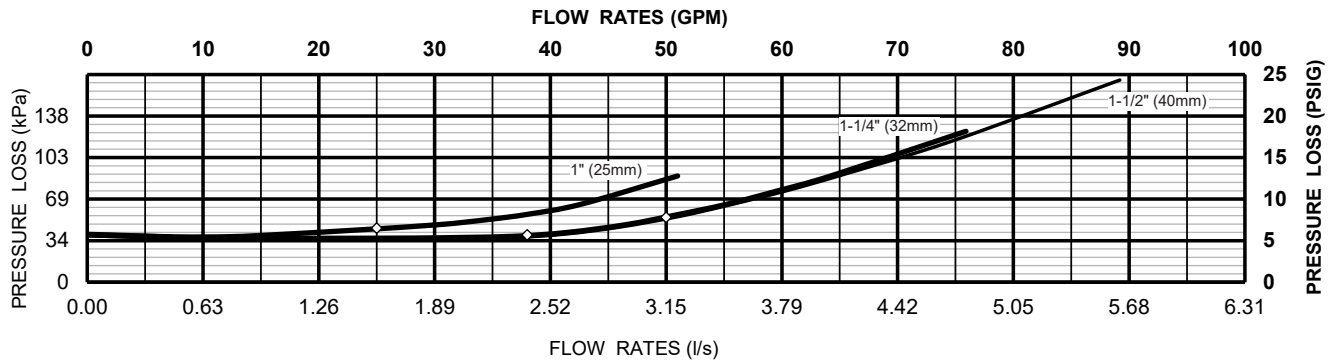
VALVE SIZE mm	REECE CODE	ZURN CODE	DIMENSIONS (approximate)		WEIGHT
			A mm	B mm	Kg
15	1011082	15-700DC	81	45	0.5
20	1011270	20-700DC	114	51	0.9
25	1011271	25-700DC	114	51	0.9
32	1006726	114UFX114F-700FPBS	160	86	1.5
40	1006728	112UFX112F-700FPBS	160	86	1.5

## Flow Characteristics

### MODEL 700 15mm & 20mm (STANDARD & METRIC)

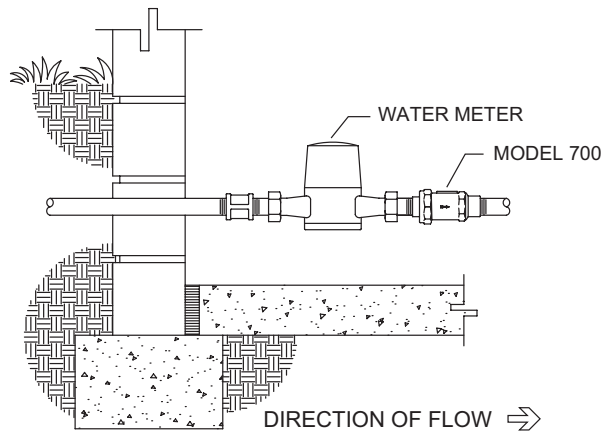


### MODEL 700 25mm, 32mm, 40mm (STANDARD & METRIC)



## Typical Installation

Local codes shall govern installation requirements. To be installed in accordance with the manufacturers' instructions and the latest edition of the Plumbing Code of Australia and/or AS/NZS 3500. Unless otherwise specified, the assembly shall be mounted at a minimum of 12" (305mm) and a maximum of 30" (762mm) above adequate drains with sufficient side clearance for testing and maintenance. The installation shall be made so that no part of the unit can be submerged.



## Specifications

The Dual Check Valve Backflow Preventer shall be WaterMark® certified. The main body shall be cast bronze (ASTM B 584), the check assemblies shall be NORYL™ (15mm) or DELRIN® (20mm-40mm). The seal ring and O-rings shall be Buna Nitrile. The Dual Check Valve shall be a ZURN WILKINS Model 700.