

MODEL 700

DUAL CHECK VALVE

Dimensional Data (mm) are Subject to Manufacturing Tolerances and Change Without Notice

Fig 1 (Size: 15mm, 20mm & 25mm)

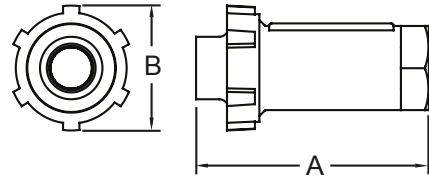
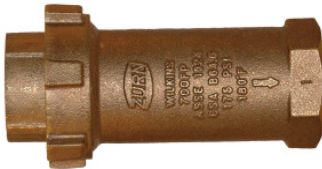


Fig 2 (Size: 32mm & 40mm)



MODEL SIZE mm	DIMENSIONS		WEIGHT kg
	A mm	B mm	
15	81	45	0.5
20	114	51	0.9
25	114	51	0.9
32	160	86	1.5
40	160	86	1.5

ENGINEERING SPECIFICATION

- Designed for installation on water lines
- Protects against both back siphonage and back pressure of polluted water into the potable water supply
- Provides protection where a potential health hazard does exist
- Installation should be governed by local codes
- The check valve should be installed so that no part of the unit can be submerged

PRODUCT INFORMATION

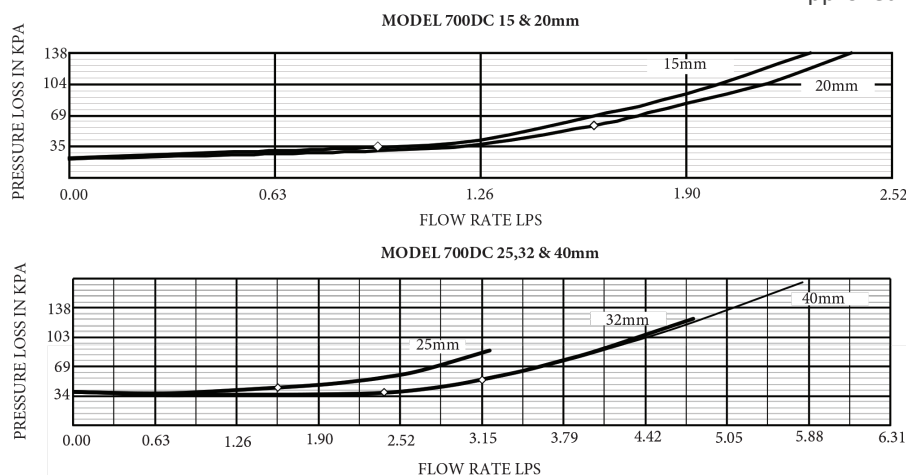
MODEL 700 FEATURES

Max. Working Water Pressure	1200kPa
Max. Working Temperature	82°C

MODEL 700 MATERIALS

Main Valve Body	Cast Bronze
Elastomers	Buna Nitrile
Polymers	NORYL, Delrin
Springs	Stainless Steel

FLOW CHARACTERISTICS



STANDARDS COMPLIANCE

- Australian Watermark (AS/NZS 2845.1) Approved Lic. 1379

