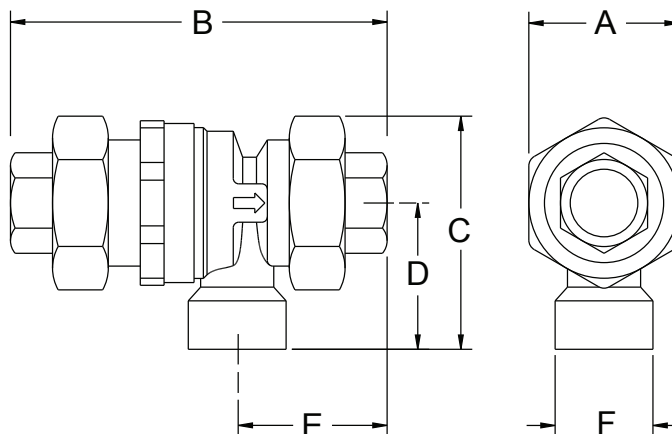
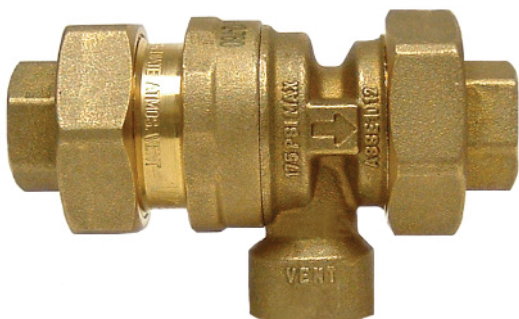


## MODEL 760

### DUAL CHECK VALVE ASSEMBLY W/INT ATMOSPHERIC VENT

Dimensional Data (mm) are Subject to Manufacturing Tolerances and Change Without Notice



#### ENGINEERING SPECIFICATION - MODEL 760

- Designed for installation on boiler fill water lines
- Protects against both backsiphonage and backpressure of polluted water into the potable water supply
- Provides protection where a potential health hazard does not exist
- Installation should be governed by local codes
- The check valve should be installed so that no part of the unit can be submerged
- Under certain conditions, the Model 760 will spill water from the vent port. WARNING: Provisions must be made to collect this spillage through an air gap or other means.
- The vent port should never be directly piped into a drainage ditch, sewer or pump.
- Under no circumstances should the vent port or drain line be plugged.
- To be installed in accordance with the manufacturers' installation instructions

Dimensions & Weights (do not include pkg.)

| MODEL SIZE | DIMENSIONS (approximate) |     |    |    |    |          | WEIGHT |
|------------|--------------------------|-----|----|----|----|----------|--------|
|            | A                        | B   | C  | D  | E  | F        |        |
| mm         | mm                       | mm  | mm | mm | mm |          | kg     |
| 15         | 48                       | 105 | 64 | 40 | 43 | 13mm BSP | 0.6    |
| 20         | 48                       | 105 | 64 | 40 | 43 | 13mm BSP | 0.6    |

#### STANDARDS COMPLIANCE

- Australian Watermark (AS/NZS 2845.1) Approved Lic. 1379
- Type Tested AS/NZS 4020 Lic. 20111



#### PRODUCT INFORMATION

##### MODEL 760 FEATURES

|                             |             |
|-----------------------------|-------------|
| Max. Working Water Pressure | 1200kPa     |
| Max. Working Temperature    | 82 Celsius  |
| Emergency Backpressure Temp | 120 Celsius |

##### MODEL 760 MATERIALS

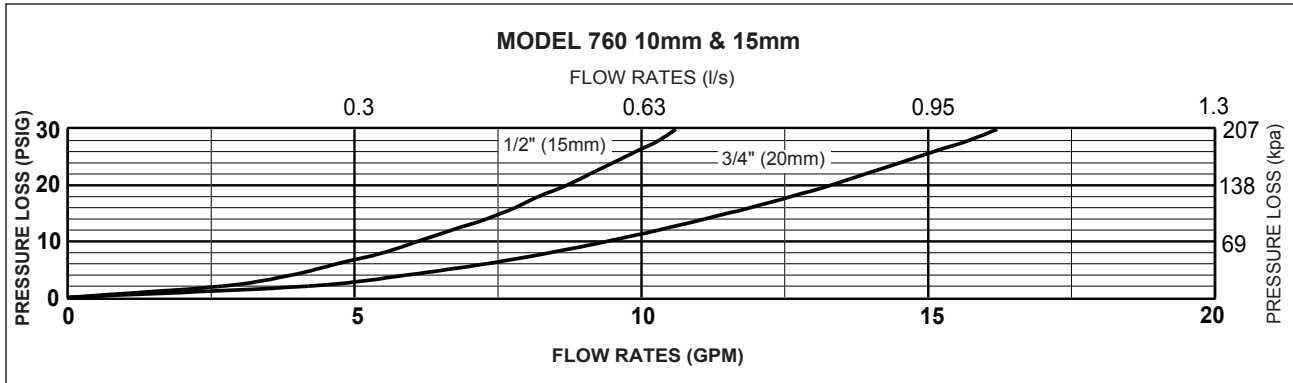
|                 |                    |
|-----------------|--------------------|
| Main Valve Body | Forged Brass       |
| Elastomers      | EPDM, Buna Nitrile |
| Springs         | Stainless Steel    |

### MODEL 760

DUAL CHECK VALVE ASSEMBLY W/INT ATMOSPHERIC VENT

Dimensional Data (mm) are Subject to Manufacturing Tolerances and Change Without Notice

#### FLOW CHARACTERISTICS



#### TYPICAL INSTALLATION

