

# FLUSH VALVES

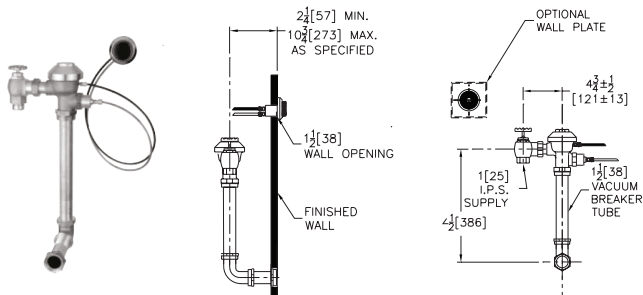
# INSTRUCTIONS

## ZH-6152XL

## AQUAVANTAGE CONCEALED FLUSH VALVE

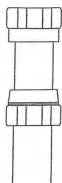
*(With Hydraulic Actuator For Water Closets)*

- Minimum water supply pressure : 175kPa
- Maximum water supply pressure : 500kPa
- Flush Volume : 6 litres
- Inlet Connection : 25mm BSP
- Required Flow Rate : 1.5 litres per second
- Zurn's AquaVantage TPE, chloramine resistant, dual seal diaphragm
- Non-hold-open type hydraulic push-button actuator that may be located up to 900mm from the valve
- One-piece hex coupling nut and adjustable tailpiece

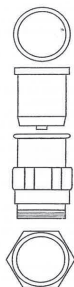


## MAINS PRESSURE (PAN) FLUSH PIPE CONNECTION

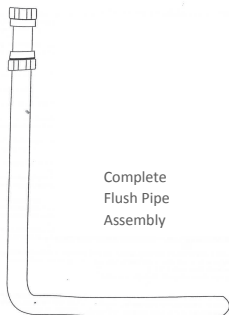
Vacuum Breaker  
Kit - Assembled



Assembly of  
Vacuum Breaker  
Kit



Complete  
Flush Pipe  
Assembly



Please note: Turn tube nut onto flush valve body hand tight plus 1/8th turn. Over tightening will damage vacuum breaker and void warranty