



WALL HUNG URINAL Model 304P-WHU INSTALLATION INSTRUCTIONS

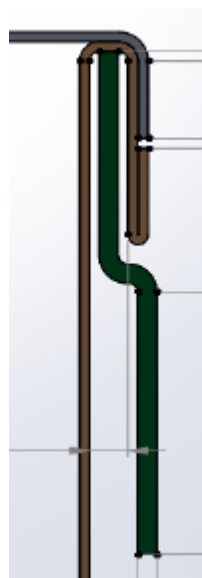
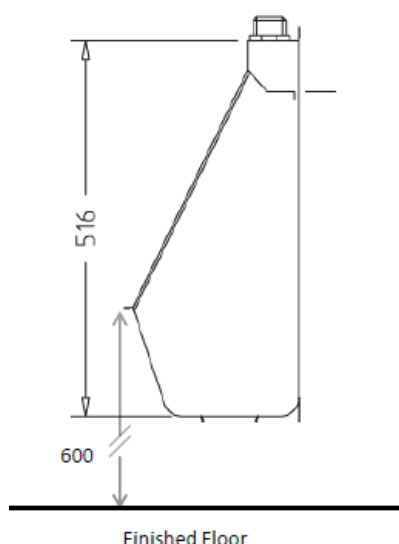
BOX CONTENTS:

- S/S Wall Hung Urinal (900, 1200, 1500, 1800, 2100 or 2400mm)
- S/S “Z” hanging bracket
- Domed 50mm outlet
- 40mm C/P Flushpipe nut
- Flushpipe rubber (usually located inside nut)
- S/S 40mm x 600mm offset flushpipe

Installation of this product shall be in accordance with the requirements of AS/NZS 3500 series

TO THE INSTALLER:

1. Ensure wall is of appropriate construction to support urinal
2. With appropriate fixings (not provided) mount “Z” hanging bracket on wall – Bracket must be mounted level to ensure efficient flushing
3. Place Urinal onto hanging bracket and push down firmly
4. With appropriate fixings (not provided) screw bottom fixing tags to wall
5. Fit 50mm Domed outlet to Urinal using either silicone or appropriate putty
6. Connect Flushpipe to Flushing device (not provided)
7. Perform flush test, urinal should have even distribution of water across rear wall while flushing. **



Showing wall and Z hanger

** If flush test performance is in-adequate, check flushing device for adequate flow.

TROUBLESHOOTING

For any further assistance with this product please refer to your nearest Zurn Australia office. Find your nearest Zurn Australia office at zurn.com.au or call 1300 00 ZURN.